



LA PEGATERA

You will hear the wings of the birds flapping



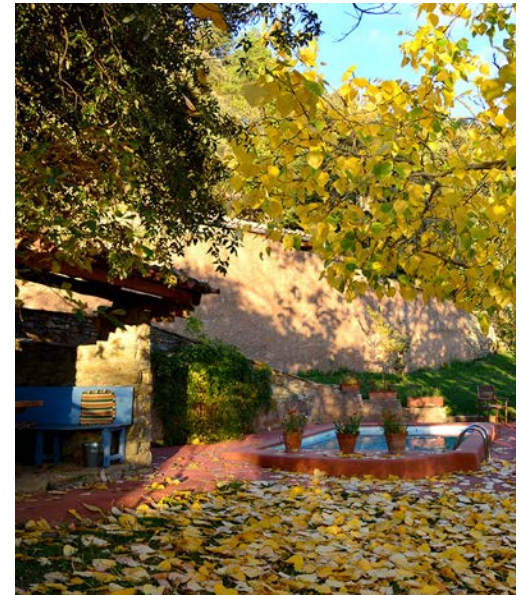
Pepona 607 918 728 - Jordi 678 586 668 - hola@pegatera.com - www.pegatera.com



The house

An old stone and wood house isolated in the middle of the forest, it is totally self-sufficient and sustainable: it is heated by fireplaces and central heating, it is illuminated by solar energy and the water flows directly from our spring. A tribute to sustainability in the middle of an unforgettable setting, and forest as far as the eye can see...

Restored with great care and attention to detail, it is warm and cosy, full of nooks and crannies where you can get together with friends or... disappear.





The house



- Capacity: maximum 7 persons
- Living area: 200 m²
- Isolated property
- water springs directly from a mountain spring
- Light generated by solar energy
- Hot water, cooker, butane gas oven
- Electric fridge
- The house is heated by fireplaces and central heating
- Swimming pool for private use, if the tenants swim, it is at their own risk
- Pets are accepted
- Non-smoking house
- Mobile coverage (No wifi)
- Dining room with fireplace/barbecue "Foc a terra"
- Kitchen with all necessary crockery and cooking utensils necessary. washing machine
- Living room with fireplace
- 2 double bedrooms, one with single beds and the other with double bed and cot.
- 1 triple mezzanine bedroom, single beds
- 2 bathrooms with shower
- Threshing floor/patio with outdoor furniture





The house





The house



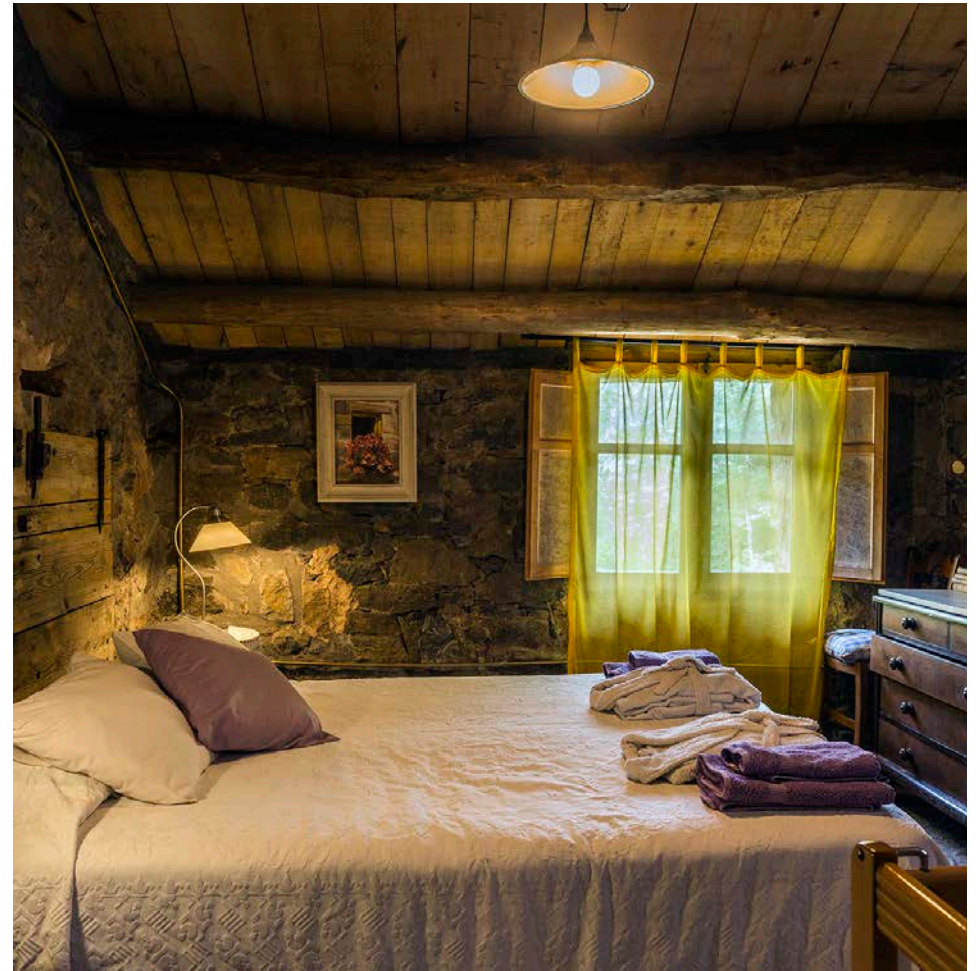


The house





The house



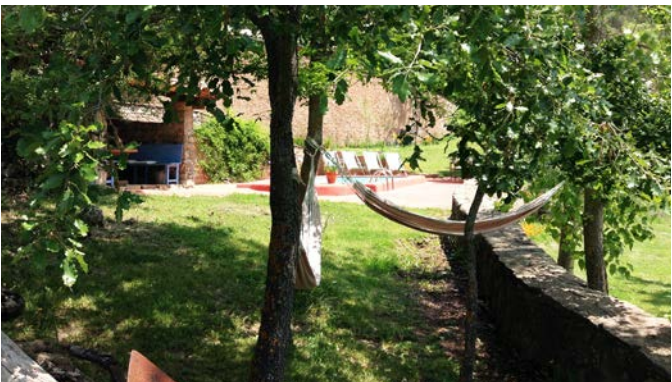


The garden





The garden



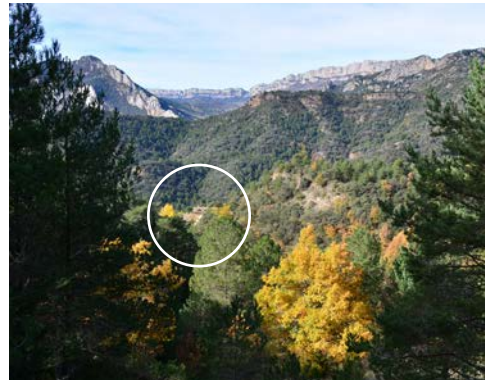


Details





The surrounding area



As you walk along the dirt road that leads to the house, you will understand all the magic that the natural environment transmits to La Pegatera. Surrounded by oak, holm oak and pine forests, you will only see and hear nature. Unspoilt nature without human intervention.

20 minutes away, a river with pools where you can bathe, and 1 hour away, Andorra and Tremp. You can also visit La Seu d'Urgell, visit the "Route of the dinosaurs", "Els Castells de Frontera", the Romanesque Route, the Sant Antoni reservoir...



La Rua



The surrounding area



"Bases del Codó"



"Bases Abellà de la Conca"



"Bases del Codó"



San Antoni reservoir



what to do and see we recommend:

"Bases del Codó" for bathing with the children.
Next to Coll de Nargó, on the L-511, from Coll de Nargó to la Pegatera, past Les Masies de Coll de Nargó, turn off towards Sallent, park 50 m. from the turn-off and walk down a small path for 5 minutes.

"Basses de Abellà de la Conca". Take the L-511 road towards Isona, at the end of the curves, take the turning to the right towards Abellà de la Conca, about 1 km from the village, take a dirt road on the right (there is a tree at the crossroads); follow it to the river (1.2 km).

San Antoni reservoir, in La Pobla de Segur, (after Tremp), there are water activities and good places for bathing, you can get there by taking the Salàs detour and then turn off towards La Estación, you will see the bathing areas. On the other side of the reservoir, after Pont de Claverol, in the direction of Aramunt, there is a great "chiringuito" (beach bar) to eat and more nice places to swim.

La Vall Fosca, following the road from La Pobla de Segur towards Senterada, there are nice little villages, the "Estany de Moncortés" for bathing and the road leads to the Natural Park of "Els Estanys de Sant Maurici".

The museums and the dinosaur footprints for children (and adults if you are interested), in Coll de Nargó and Isona.

Dinosaurs Museum of Coll de Nargó

Límit K-T room. C. de la Unió, 10 / Offices: Pl. de l'Ajuntament, 1. 25793 Coll de Nargó (Alt Urgell)
Tel. 973 38 30 48 - 636 41 76 78. www.collnargo.com

The Museum of the Conca Dellà, Isona

Information and arranged visits: C/ Museu nº 4.
25650. Isona - Lleida

Tel: 973 66 50 62. www.parc-cretaci.com

In Isona, next to the hermitage of La Posa, you must see the dinosaur footprints.

Rafting, hydrospeed, canyoning... in Sort

www.raftingsort.com - Tel.: +34 973 620 220

Paragliding, paramotoring, kayaking... in Àger

www.entrenuvols.com - Tel.: +34 639 776 659 / +34 973 455 023

Paragliding in Organyà

www.volarenparapente.com - Tel.: +34 633 217 141

Canyoning in Boixols

www.barranquismoenlacedanya.com/ca/barrancos/barranc-del-forat-de-boixols/
Tel. +34 644 317 508

La Seu d'Urgell

Andorra

The market days are funny, I attach the weekly markets and the towns:

Monday: Tremp

Tuesday: La Seu d'Urgell

wednesday: La Pobla de Segur

Saturday: La Seu, Oliana and Isona

Sunday: Organyà



Rafting (Sort)



what to do and see

www.raftingsort.com
www.laseu.org/turisme/cat/
www.turismedia.com/pallars_jussa_isona.htm
www.weblandia.com/castillos/mur.htm
www.firesifestes.com/Fires/F-Rais-CollNargo.htm
www.alturgell.org/Coll_de_Nargo.html
www.terra.es/personal/casvalldarques/excursio.htm
www.andorraportal.com/cast/Mapa1/index.asp
www.portdelcomte.net/present.asp
www.entrenuvols.com/es/index1_es.htm
www.volarenparapente.com
www.barranquismoenlacerdanya.com/ca/barrancos/barranc-del-forat-de-boixols/

Popular festivals and fairs

Valldarques

Annual festival, first Sunday in September
Aplec de Sant Miquel, 1st of May
Sant Romà town festival, 17th November

Coll de Nargó

Local festival, 25th July, Sant Jaume (St. James)
Aplec de Sant Miquel, second Sunday in May
Ranxo a la plaça, Tuesday of Carnival
La baixada del rai, third Sunday in August
La fira del rovelló, Pilar long weekend

Organyà

Festa Major, 15th August
Aplec de Santa Fe, Easter Monday Florida
Fira de Sant Andreu, last Sunday in November

La Seu d'Urgell

Fira de Sant Andreu, last Sunday in August
Sant Ermengol Fair, third Sunday in October

Oliana

Main Festival, first Sunday in August
Fair of Tots Sants

Castellbó

Cathar Days, 7 to 11 August
Representation of the death of Arnaldeta, 17th August.

Cabó

Representation of Arnaldeta de Caboet, 24 and 25 August

Arsèguel

Accordion players' meeting, last Saturday in July



San Antoni reservoir (La Pobla de Segur)



How to get there

The house is located in the municipality of Coll de Nargó, Lleida.
Wherever you come from, take the L-511 road from Coll de Nargó to Isona. At km 25, turn off towards Gavarra.
After 700 m, go down the first road on the right. Approximately 700 m later, you will arrive at La Pegatera.

